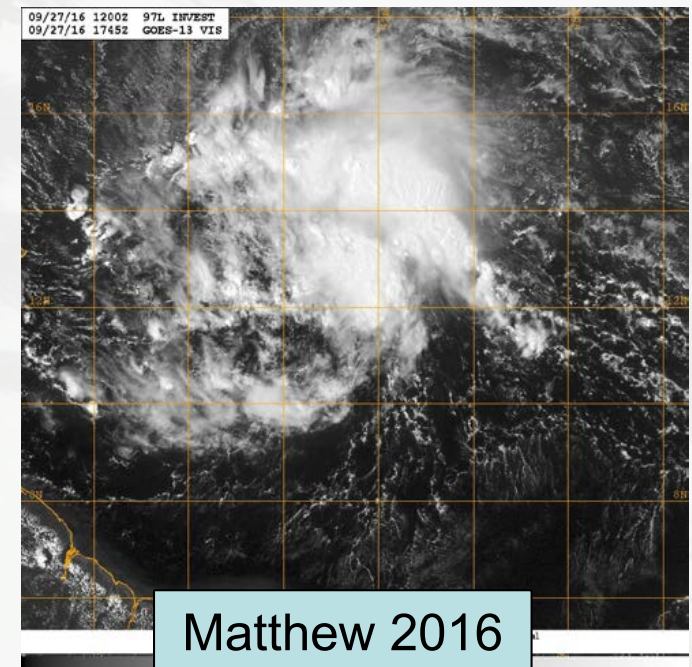
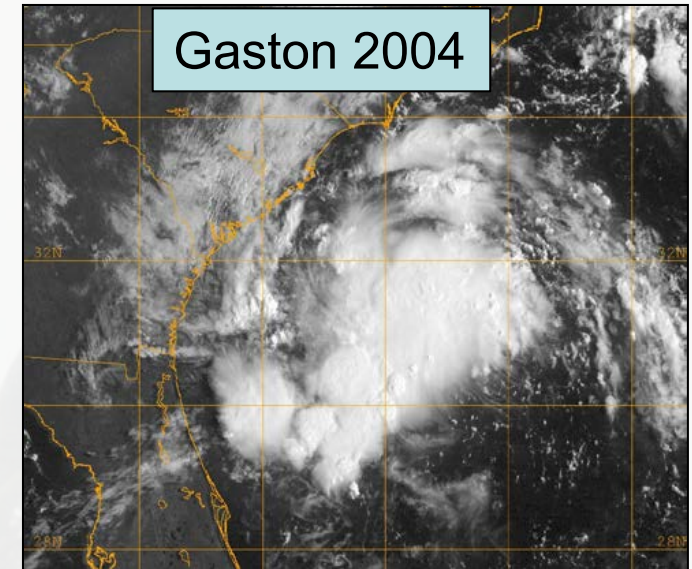


Watches and Warnings Before Tropical Cyclone Formation

- NHC will have the option to issue advisories, watches, and warnings for disturbances that are not yet a tropical cyclone but which pose a threat of bringing tropical storm or hurricane conditions to land within 48 hours.
- Regular Tropical Storm and Hurricane Watch and Warning criteria apply
 - Watch – conditions possible within 48 h
 - Warning – conditions expected within 36 h

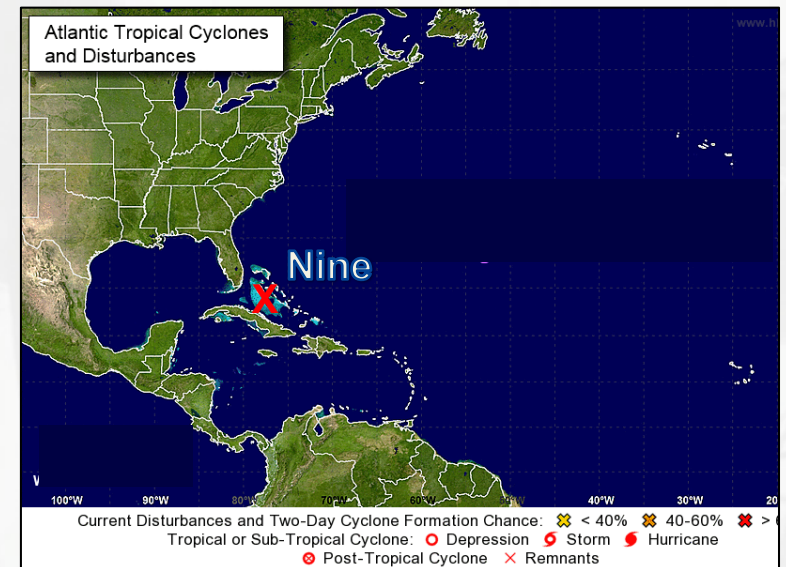
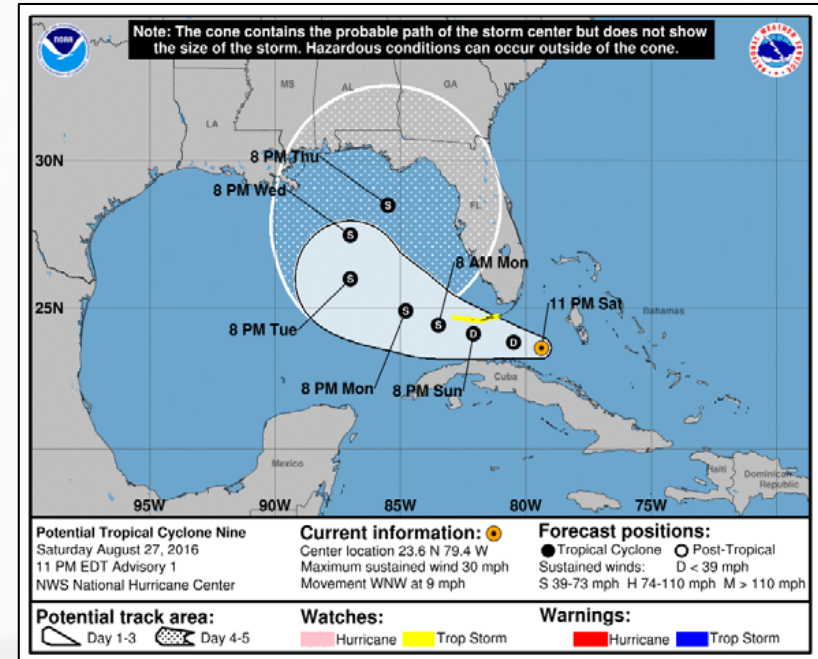




Watches and Warnings Before Tropical Cyclone Formation



- Accompanied by the standard suite of NHC advisory products
 - Public Advisory (including Intermediates)
 - Forecast Advisory
 - Discussion
 - Wind Speed Probabilities
 - Cone graphic
 - Storm surge products, as needed
- Genesis probabilities will appear in both the Tropical Weather Outlook and the Public Advisory.
- The Graphical TWO will no longer display a formation area for these systems, to avoid confusion with the (now available) 5-day track forecast and cone graphic.

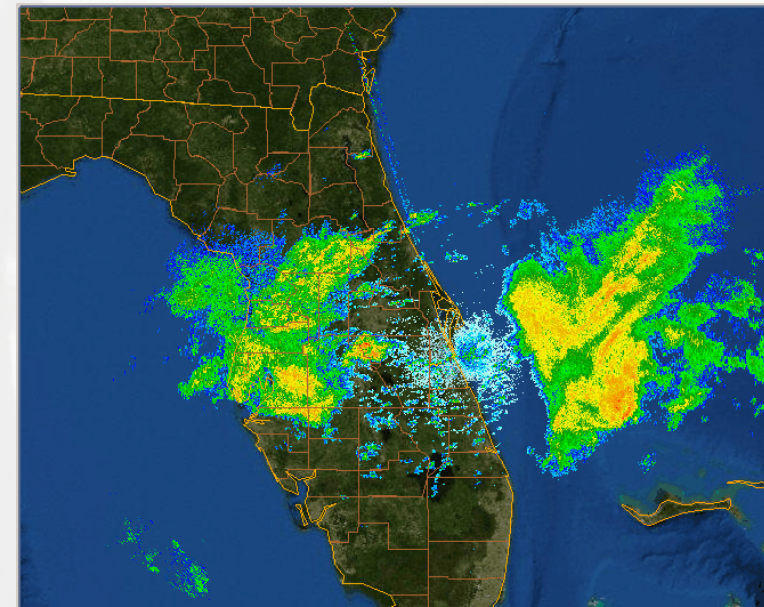
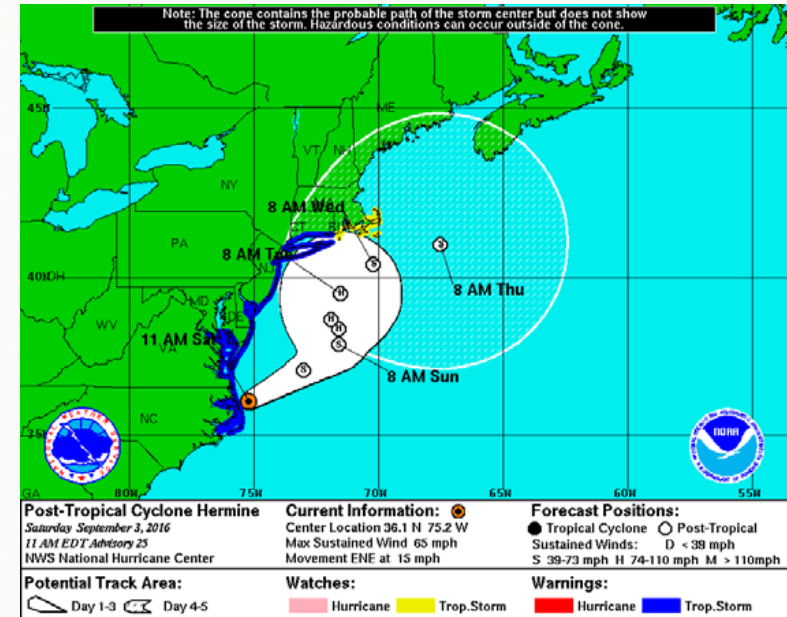




Watches and Warnings Before Tropical Cyclone Formation



- Initial advisory issuance is not directly tied to tropical cyclone formation chance.
- Initial issuance criteria include:
 - Likely impacts
 - Need for tropical cyclone watches or warnings
 - Desire to avoid switching warning types (tropical vs. non-tropical)







Potential Tropical Cyclone *Messaging Considerations*



- *Issued only for systems threatening land within the watch/warning time frame.*
- Advisory packages will be discontinued when watches and warnings are no longer necessary.
- When the threat is not imminent this could result in occasional gaps in product issuance.

**NATIONAL HURRICANE CENTER**
NATIONAL OCEANIC AND ATMOSPHERIC ADMINISTRATION

POTENTIAL TROPICAL CYCLONE ONE PUBLIC ADVISORY NUMBER 1
NWS NATIONAL HURRICANE CENTER MIAMI FL AL012016
400 PM CDT WED JUN 5 2016

...TROPICAL DISTURBANCE OVER THE EAST-CENTRAL GULF OF MEXICO EXPECTED TO BECOME A TROPICAL STORM...
...TROPICAL STORM WARNING ISSUED FOR PORTIONS OF THE WEST COAST OF FLORIDA...

SUMMARY OF 400 PM CDT...2100 UTC...INFORMATION

LOCATION...25.3N 86.5W
ABOUT 310 MI...500 KM SW OF TAMPA
ABOUT 320 MI...510 KM SSW OF APALACHICOLA FLORIDA
MAXIMUM SUSTAINED WINDS...35 MPH...55 KM/H
PRESENT MOVEMENT...N OR 360 DEGREES AT 3 MPH...6 KM/H
MINIMUM CENTRAL PRESSURE...1010 MB...29.92 INCHES

WATCHES AND WARNINGS

CHANGES WITH THIS ADVISORY...

A Tropical Storm Warning has been issued for the west coast of Florida from Boca Grande to Ochlockonee River.

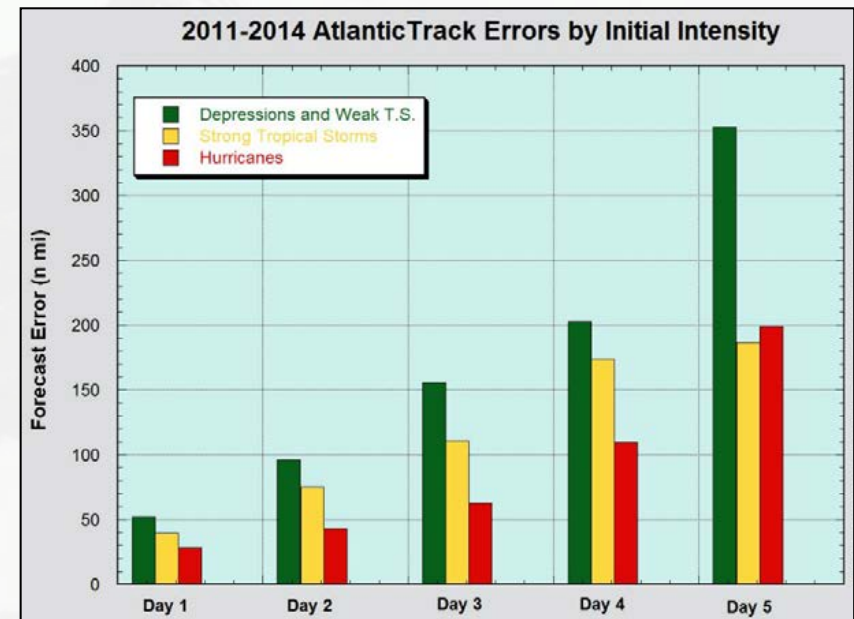
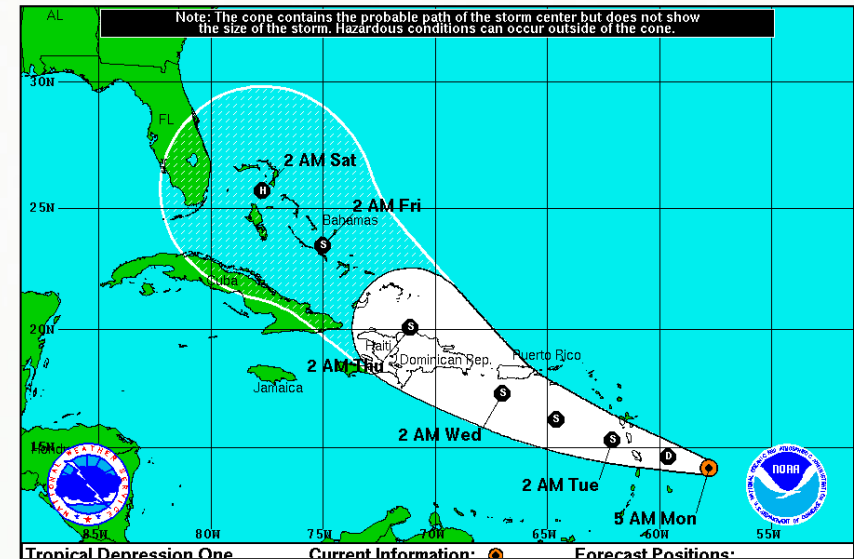
SUMMARY OF WATCHES AND WARNINGS IN EFFECT...

A Tropical Storm Warning is in effect for...
* The west coast of Florida from Boca Grande to Ochlocknee River

A Tropical Storm Warning means that tropical storm conditions are expected somewhere within the warning

Potential Tropical Cyclone *Messaging Considerations*

- Earlier NHC advisories for systems that pose a long-range threat to the United States or other land areas.
- Forecasts likely to have greater uncertainty.
 - Intensity forecasts are likely to be conservative.
- False alarms could:
 - Reduce long-term effectiveness of watches and warnings
 - Affect reputation & trust of NHC tropical cyclone forecasts



Key Takeaways

- Invests say nothing about a systems development potential. Users should refer to the Tropical Weather Outlook or Potential Tropical Cyclone advisories!
- Hatched areas on the 5-day Graphical Tropical Weather Outlook represent the potential formation area – not a true track forecast.
- NWS/NHC now able to provide appropriate lead time for watches and warnings for potential tropical cyclones!!

